



# Post LASIK Ectasia

Patient PP Female Age 30

## Successful silicone hydrogel fit

**History:** PP, a 30 year old woman underwent LASIK OU in 2002. Vision was stable and clear for 4 years, OD 6/6, OS 6/7.5. Since 2006 PP notices continuous deterioration of VA in her left eye. Now OS 6/21.

### 09/2007

Follow up refraction:

**OD:** PL/-0.50x140 6/6-

**OS:** -2.50/-1.75x035 6/12-, dist.

topography reveals keratoectasia OS:

### 09/2007

PP was fitted with Soft-K for keratoconus, GM3 material (Soflex Ltd., Israel):

BC 7.90; PWR -4.00 Dia. 14.20; VA was 6/9-, with all day wearing time.

### 03/2008

PP reports inability to wear contact lens more than 4-5 hours a day over the past 7-10 days.

### Contact lens corrected VA OS of 6/20-

- 360 degree Corneal Neovascularization, diffuse corneal staining and central erosion. Patient was instructed to discontinue lens wearing for the next 2 weeks and scheduled for refitting visit.

### Patient was refitted with steeper, BC 7.60, Soft-K, GM3 contact lens.

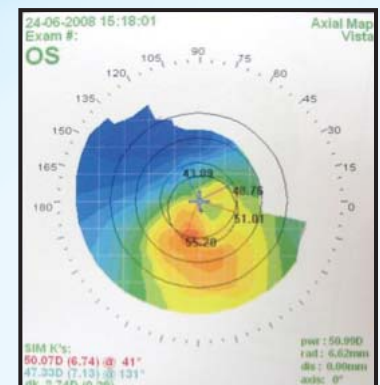
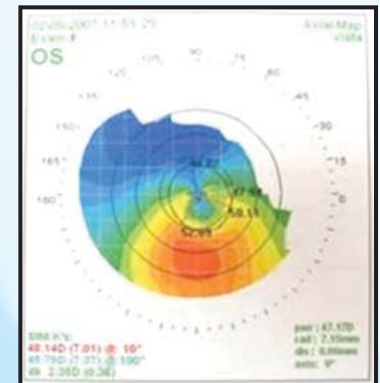
- 2 month follow up revealed corneal neovascularization of the same stage, drop of contact lens corrected VA to 6/18 and inability to wear the lens more than half working day.

Topography examination revealed deterioration of corneal ectasia (steepening). Patient was advised to undergo Cross Linking (CXL) procedure for corneal stabilization in her left eye.

### 07/2008

One month after CXL procedure PP was scheduled for CL fitting. Unaided visual acuity was: OS 6/60-

Trial fitting with Soft-K, GM3 material lens showed unsatisfactory VA levels @ 6/20, Patient was advised to be refitted with RGP lens, but refused RGP fit. SiH Soft-K, Definitive™ lens tried as an option to avoid RGP lens fitting.



**First lens parameters:****SiH Soft-K BC 7.60; Power -4.00 Diam 14.20; VA 6/12-**

Patient reports lens awareness and lid irritation for all 30 min wearing time. Excessive lens movement greater than 2 mm was observed. After refitting the BC was steepened by 0.3 mm.

**Second lens parameters:****SiHy Soft-K BC 7.30; Power -4.75; Diameter 14.20; VA 6/12+ (6.10-)**

Great improvement in lens sensation immediately after lens insertion, lens movement decreased to approximately 1 mm. Patient very satisfied with achieved visual acuity.

**08/2008**

One month after starting to wear SiH, Definitive™ lens VA remains stable, patient reports 10 h/day lens wearing time with occasional usage of lubricating agents. No progression of corneal neovascularization was observed.

**Conclusion:** New Definitive™ SiH material custom made soft contact lenses are a viable option for management of primary and secondary corneal ectasia. Due to the unique mechanical properties and the increased oxygen transmissibility of the material, improved corneal physiology and visual function were comfortably achieved.

**Author:**

**Boris Severinsky**  
Cornea Unit, Contact Lens Clinic  
Hadassah University Hospital  
Jerusalem  
Israel

**Lenses produced by:**

**Soflex Ltd.**  
Bar-Lev Industrial Park  
Israel  
[www.soflexcontacts.com](http://www.soflexcontacts.com)

Telephone +972-4-9955600  
Fax +972-4-9911025  
e-mail [soflex@soflexcontacts.com](mailto:soflex@soflexcontacts.com)

CONTAMAC

**Contamac Ltd**

Orchard House Bearwalden Business Park  
Wendens Ambo Saffron Walden  
Essex CB11 4JX UK

Tel: +44 (0)1799 544400  
Fax: +44 (0)1799 543000

E-mail: [professionalservices@contamac.com](mailto:professionalservices@contamac.com)

CONTAMAC US

**Contamac US**

806 Kimball Avenue  
Grand Junction, CO 81501

Tel: 1-(970) 242 3669 Fax: 1-(970) 243 5501  
Toll Free: 1-866 US CONTAMAC  
(1-866 872 6682)

E-mail: [professionalservices@contamac.com](mailto:professionalservices@contamac.com)