



# Keratoconus

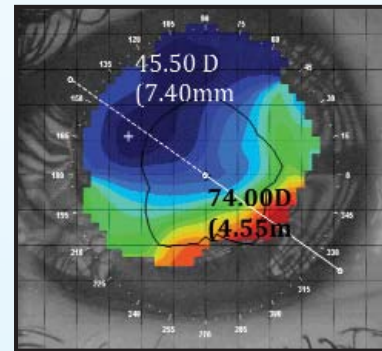
Patient DU Female Age: 30 years

## Scleral Lens

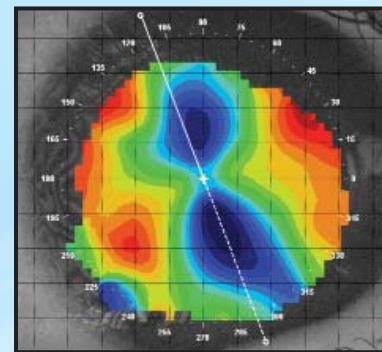
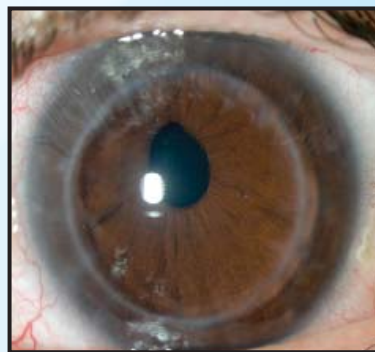
DU was diagnosed with bilateral Keratoconus when she was 16 years old. She underwent PKP procedures OD 1995 and OS 1996. Additionally, she had bilateral IOLs in 1998. Due to graft tilt and the resultant significant topographical asymmetry, she was unable to be fit with traditional corneal GP designs due to centration issues and specialty soft lenses were unable to provide adequate vision.

Scleral lenses were therefore indicated.

OD



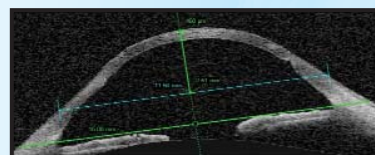
OS



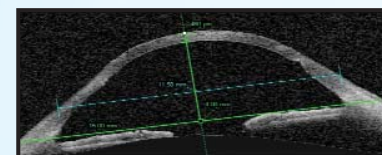
Ocular Coherence Tomography (OCT) was utilized to indicate relative Sagittal depths for both eyes at both the 13.5mm and the 15.00mm chords.

## Ocular Coherence Tomography

OD Sagittal Depth



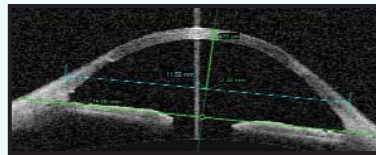
13.5mm chord=sag@ 2.97mm



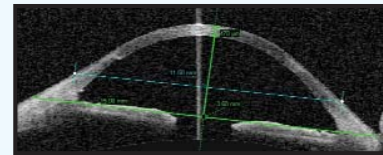
15.0mm chord=sag@ 4.46mm



## OS Sagittal Depth



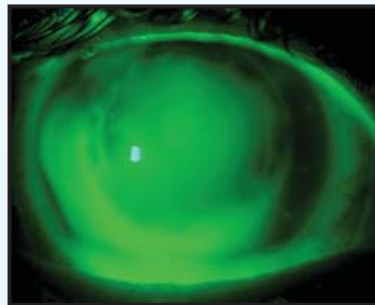
13.5mm chord=sag@ 2.80mm



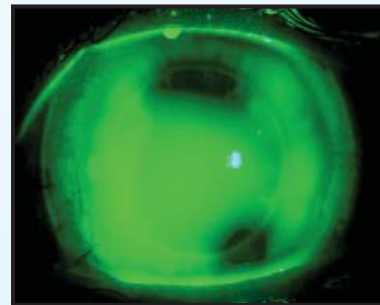
15.0mm chord=sag@ 4.15mm

OCT was useful in selecting diagnostic lenses. The scleral diagnostic lenses were 15.0mm. Diagnostic lenses were applied with fluorescein and final lenses were chosen that demonstrated apical clearance and minimal touch.

## OD



## OS



### The final Scleral lens specifications:

Right Eye: SOCLEAR BC 58.00 D. (5.80 mm) Power -6.50 D. Dia. 15.0 mm 20/30-1  
 Left Eye: SOCLEAR BC 52.00 D. (6.50 mm) Power -7.00 D. Dia. 15.0 mm 20/20-2

### Material: Contamac Optimum® Extreme

Patient DU is grateful to have a lens choice that allows her comfortable, excellent vision for 12-14 hours daily. She understands the need to replace her lenses annually and to return for frequent follow-up visits.

### Distributed by:



#### Pacific University

Pacific & Birch Streets  
 Forest Grove,  
 OR 97116

Freephone (UK only)

Telephone

Fax

[www.pacificu.edu](http://www.pacificu.edu)

0800 585115

503.352.2208

503.352.2261

## CONTAMAC



### Contamac Ltd

Orchard House Bearwalden Business Park  
 Wendens Ambo Saffron Walden  
 Essex CB11 4JX UK

Tel: +44 (0)1799 544400

Fax: +44 (0)1799 543000

E-mail: [professionalservices@contamac.com](mailto:professionalservices@contamac.com)

## CONTAMAC US



### Contamac US

806 Kimball Avenue  
 Grand Junction, CO 81501

Tel: 1-(970) 242 3669 Fax: 1-(970) 243 5501

Toll Free: 1-866 US CONTAMAC

(1-866 872 6682)

E-mail: [professionalservices@contamac.com](mailto:professionalservices@contamac.com)