



# GP Post Surgical

Patient CJ Female Age: 52 years

## So Clear for Post Penetrating Keratoplasty

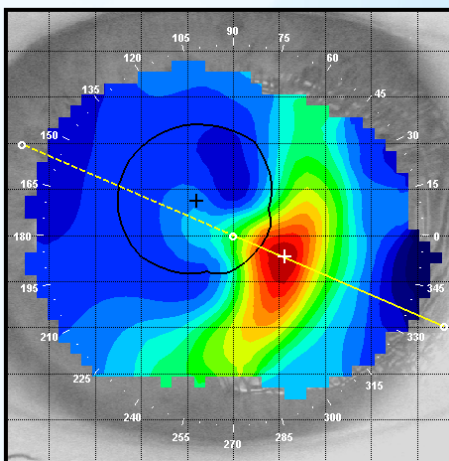
**History:** Patient CJ was diagnosed with aggressive Keratoconus in her late teens. She wore various Keratoconus contact lens designs over the years until her Keratoconus advanced to the need for corneal transplants OU.

CJ underwent OU PKP surgery: OD 1999, OS 2001. She successfully wears a spherical GP lens on her right eye, but has been unsuccessful with the GP fit on her left eye due to significant graft tilt/bulge. None of the lenses she has tried would centre well and would frequently de-centre and dislodge altogether.

Vision: R: N/A  
Spectacle RX: R: N/A  
Keratometry: R: N/A

L: 6/50  
L: -1.50 -2.25 x 075 6/15  
L: 7.37/7/60 x 80 3+dist

Topography: LE



So Clear Fluorescein: LE





**Lens type fitted:** So Clear OS with Contamac's Optimum Extra™ material.

**R:** N/A

**L:** 6.40/14.00/-9.00 VA 6/6

**Wearing time:** The fitting process was very straightforward. The So Clear lens is now stable and centres very well. The patient is extremely happy with the outcome and can wear her new GP lens all day.

"This lens is actually more comfortable than the standard GP that I'm wearing on the right eye. I am considering having the right eye fit with one of this type."

### Manufactured by:



Unit 3 Highfield Business Park  
Sidney Little Road  
Hastings  
East Sussex  
TN38 9UB

Tel: +44 (0)1424 850620

Fax: +44 (0)1424 850650

Website: [www.no7-contact-lenses.co.uk](http://www.no7-contact-lenses.co.uk)

E-mail: [info@no7-contact-lenses.co.uk](mailto:info@no7-contact-lenses.co.uk)

### Produced by:

#### Contamac Ltd

Orchard House Bearwalden Business Park  
Wendens Ambo Saffron Walden  
Essex CB11 4JX UK

Tel: +44 (0)1799 544400

Fax: +44 (0)1799 543000

E-mail: [professionalservices@contamac.com](mailto:professionalservices@contamac.com)

#### Contamac US

806 Kimball Avenue  
Grand Junction, CO 81501  
U S A

Tel: 1-(970) 242 3669

Fax: 1-(970) 243 5501

Toll Free: 1-866 US CONTAMAC  
(1-866 872 6682)

E-mail: [professionalservices@contamac.com](mailto:professionalservices@contamac.com)