



# Keratoconus

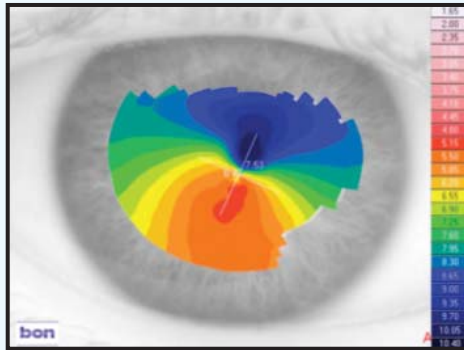
Patient DH Female Age: 41 years

## OD Keratoconus/OS Corneal Graft

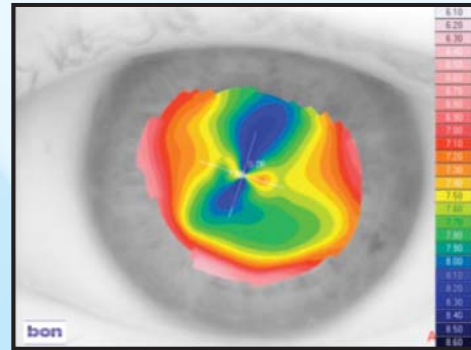
**History:** DH was diagnosed keratoconus 20 years previously and used to wear RGP contact lenses with reasonable comfort. When contact lens wear became difficult in the left eye 10 years ago, this eye was grafted. She had not worn any contact lenses since then, as RGPs were now too uncomfortable due to allergies and she got reasonable vision in spectacles. However, her problems were multiple images and ghosting in the dark which made driving at night virtually impossible. She also wanted to return to contact lens wear as an alternative to spectacles.

<b>Vision:</b>	R: 6/36	L: 6/18
<b>Spectacle RX:</b>	R: -2.00/-1.75 x 90 VA 6/7.5	L: +2.50/-3.50 x 70 VA 6/7.5
<b>Keratometry:</b>	R: 7.43 x 69/6.68 x 159	L: 8.45 x 79/7.67 x 169

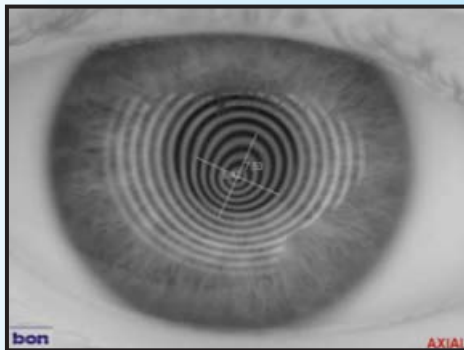
Topography: RE



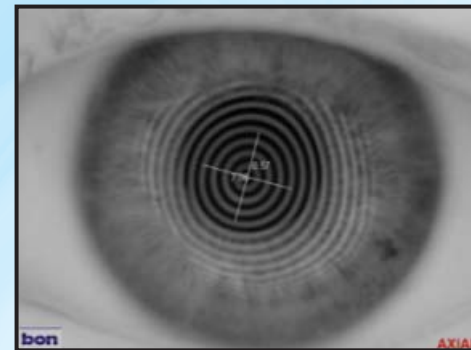
LE



Keratometry: RE



LE



**Lens type fitted:** KeraSoft®3 by Ultravision produced in Contamac Definitive® Silicone Hydrogel material

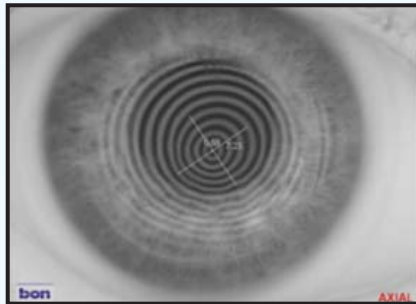
R: 8.20/14.50/-2.00/-2.00 x 100 VA 6/6 -3

L: 8.20/14.50/+2.50/-3.00 x 85 VA 6/6

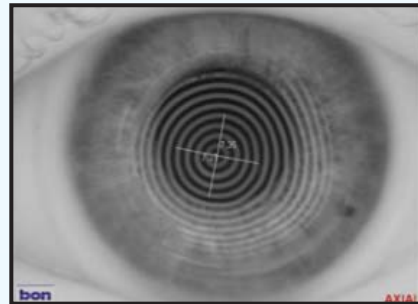


## Keratotomy of lenses in situ

RE

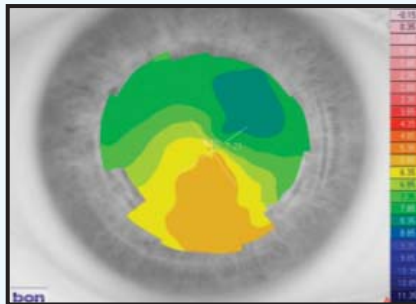


LE

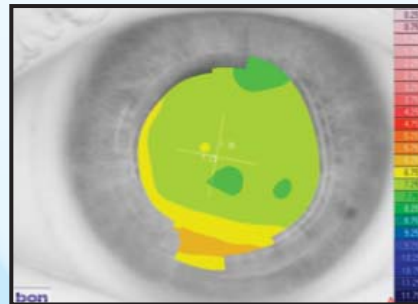


## Topography of lenses in situ

RE



LE



**Wearing time:** All day wear amounting to 10 – 12 hours with full comfort was achieved. The multiple images and severe ghosting were largely eliminated, which allowed her to drive at night in comfort and safety. She had originally intended to obtain contact lenses as an occasional alternative to spectacles, but such was the improvement in her vision and the comfort of the lenses, she has now opted to wear her contact lenses on a daily basis.

### Distributed by:

**ULTRAVISION** CLPL  
INNOVATION IN PRACTICE

#### UltraVision

Commerce Way  
Leighton Buzzard  
LU7 4RW  
United Kingdom

Freephone (UK only)

Telephone

Fax

[www.ultravision.co.uk](http://www.ultravision.co.uk)

0800 585115

+44 (0)1525 381112

+44 (0)1525 370091

## CONTAMAC



### Contamac Ltd

Orchard House Bearwalden Business Park  
Wendens Ambo Saffron Walden  
Essex CB11 4JX UK

Tel: +44 (0)1799 544400

Fax: +44 (0)1799 543000

E-mail: [professionalservices@contamac.com](mailto:professionalservices@contamac.com)

## CONTAMAC US



### Contamac US

806 Kimball Avenue  
Grand Junction, CO 81501

Tel: 1-(970) 242 3669 Fax: 1-(970) 243 5501

Toll Free: 1-866 US CONTAMAC

(1-866 872 6682)

E-mail: [professionalservices@contamac.com](mailto:professionalservices@contamac.com)